

Criss-Cross Arch

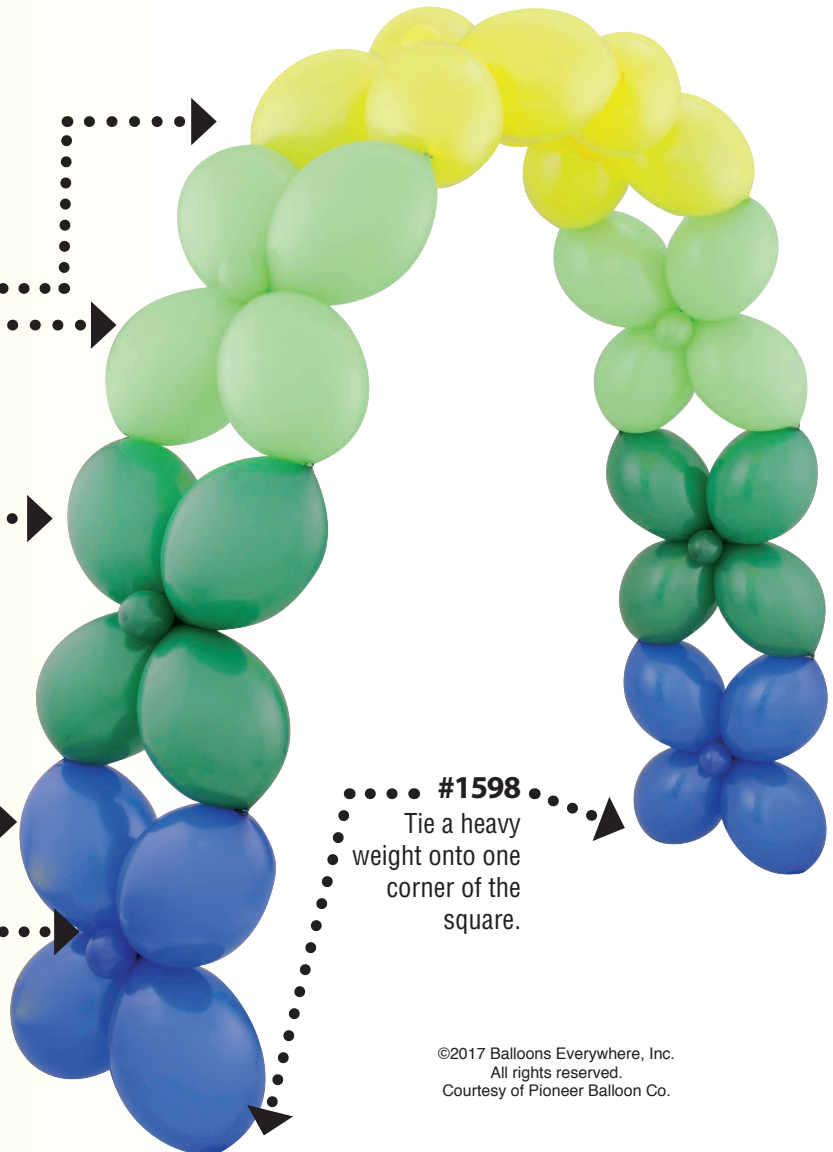
Ultra Hi-Float®, helium inflate two like-colored pairs to 11" and tie into duplets. Tie duplets together to form a chain of 16, in order shown. Repeat to form an identical chain.

- #12803
- #12806
- #12810
- #12804

- #5124
- #5230
- #5122
- #5121

Air inflate two like-colored pairs to 3.5" and tie into duplets. Set aside.

#1598
Tie a heavy weight onto one corner of the square.



©2017 Balloons Everywhere, Inc.
All rights reserved.
Courtesy of Pioneer Balloon Co.

MATERIALS

QTY	ITEM	SIZE	DESCRIPTION
1	12804	12"	Dark Blue Quick Link™ Balloons
1	12810	12"	Green Quick Link™ Balloons
1	12806	12"	Lime Quick Link™ Balloons
1	12803	12"	Yellow Quick Link™ Balloons
1	5121	5"	Dark Blue Latex
1	5122	5"	Green Latex
1	5230	5"	Lime Green Latex
1	5124	5"	Yellow Latex
1	1714		Ultra Hi-Float™ (16 oz.)
2	1598		Heavy Smile Weights

Place the two chains side-by-side. Starting at the weighted end, cross one of the dark blue Quick Link™ duplets over the adjacent dark blue Quick Link™ duplet (forming an "X" shape). Wrap a 3.5" dark blue duplet around the intersecting knots, positioning one on the front and one on the back. Twist the 3.5" duplet to secure into place.

Repeat to make an "X" shape with the remaining like-colored duplets of Quick Links™ and wrap 3.5" duplets around each center as shown to secure.